



PSYCHIC RESEARCH NEWSLETTER

27

vol. 6 no. 5 sept. - oct. 1989

PSYCHIC RESEARCH LAB IN NEED OF HELP!

The funds have run out to support this laboratory and, for the first time in our existence, we are in a position to have to come to you and sincerely ask for your financial support. Up to now the laboratory has been supported by grants, the lectures that I have given and the sale of crystals and newsletters. Our grant funding has ended causing us to come face to face with the very real possibility of CLOSING OUR DOORS! We do not want this to happen. Too much good needs to be done so that we may continue our efforts to expand the potential of major discoveries in many fields. Let me list a few of them:

1. Purification of water.
2. Finishing of wine.
3. Stabilization of food stuffs.
4. Developing a new family of crystals even more sensitive to the mind of an individual.

We have found a means of accessing a crystal with the mind to store a thought-form. This has been proven in the finishing of wines at the Sycamore Creek Winery for 14 months. This resulted in 12 awards being given for the structured wines against competition in the state of California.

Please help us. WE NEED YOUR HELP TO GET BACK ON OUR FEET and get rolling again.

P.R.I. is a non-profit corporation which provides research and education to aid humanity. Your contribution is tax-deductible to the extent allowed by law. Thank you for allowing us to continue our research.

Sincerely,

Marcel J. Vogel

Happy Holidays

INFORMATION BAND

by Marcel Vogel

In past articles I have explained how information is stored in bone, wood, stone, and tissue. The term "information transfer" describes the summation of forces (such as light, heat, electricity, electrostatic or magnetic fields) which have acted on an object. These forces are stored, at a given critical moment, as a set of geometrical patterns that we refer to as the INFORMATION BAND. These patterns are NOT in the dimension governed by the laws of time and space. When the appropriate geometrical structure is formed, a certain oscillation is achieved which resonates with the ground state of the object in the time and space continuum. This pattern of information then transfers down through the next levels (i.e. from the information band to the conduction band and then to the ground state of the object). Now the information is locked in place (see diagram on following page).

Adding bits of information to construct the geometric structure

of the information band is the equivalent of adding pieces to a jigsaw puzzle. When the last piece has been placed in the puzzle, there is a completion and a quantum leap out of time and space to the information band results. This explains what happens in our experiments where we pass wine in a coil around a crystal repeatedly and observe an exceptional jump in measurements when we have made the 3rd or 4th pass, and an immediate zero reading (or nearly zero) with the Omega 5 on the 5th pass. This extra bit of information which is supplied by the 5th pass, has the effect of totally destroying the existing geometric structure and of bringing the entropic state down to the ground level. Once we have found the optimal mathematical equation (vibration) and supply THAT to the crystal, then a single pass around the crystal does the COMPLETE INFORMATION TRANSFER because we have been able to correctly define the resonance frequency.

In our research we have been monitoring the interaction of a

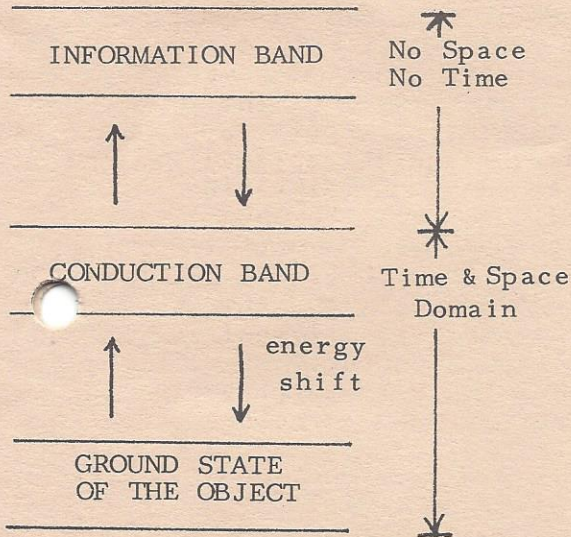
(continued on page 3)

PSYCHIC RESEARCH, INC. NEWSLETTER © VOL.6 NO.5 SEPTEMBER-OCTOBER, 1989
 (Published six times per year) Editors: Dr. Marcel Vogel, Katy Salazar and Jennet Grover. P.R.I., 1725 Little Orchard St. Unit C, San Jose, CA. 95125, 408-279-2291. Subscriptions are \$25 for 12 issues. Back issues are \$4 each. Psychic Research, Inc. is a non-profit corporation using scientific research and education to aid humankind.

(continued from page 2)

fluid (such as water or wine) spinning in a coil around a specifically programmed crystal. We are actually measuring a magnetic field, as it exists in "empty" space, at a distance of approximately 4" from the crystal using a milli-gaussmeter. A number of passes are made by the fluid around the crystal and a sample is taken from each of these runs and measured additionally with an Omega 5 for the energetic transformation taking place within the fluid.

When the mind of a person, either independently or through a programmed crystal, is attuned to these patterns, a magnetic field



The energy shifts are caused by the application of forces (i.e. light, heat, etc.); the transfer of the information band into the conduction band is directed by consciousness.

is initiated. This pulsing magnetic field oscillates with the activator of the information band which is the input of consciousness, to create a resonance. These two act in a manner of opposing vortexes, linking the information band through the fourth to the third dimension, where it becomes or functions as part of the object (or fluid) with which it was interacting. We have observed this in the structuring of fluids with a programmed crystal.

We have, in crystallographic solids, a ground state of the electronic activity in the crystal which, when given an external activation, causes the electronic charge to move to the conduction band. If there is a perturbation between this conduction band and the ground state, the energy comes out in a quantum photon of light (luminescence) from within the crystal. What we are talking about now is not the electronic activity of the crystal (or matter) of an electronic or atomic nature, but the total summation of forces which brings or keeps that object together or whole.

Crushed grapes, for instance, contain the information of their interaction with the sun, time and temperature, in addition to their heritage of sugars, esters, and the rest of the chemistry of the grape. The sugars are converted to alcohol and the process is tempered willfully by the skill of the winemaker. A proper program can be added to a crystal to bring the potential chemical activities to an abrupt, immediate culmination: the proper pro-

(continued on page 4)

(continued from page 3)

gram is the sum of all physical and superphysical events for a specific process.

This information band is not limited by time or space and once the skill is developed by an operator or a system to identify and resonate with this band, there is an abrupt, immediate change from one state to another, from one band to another. The change is instantaneous and requires no energetic intervention of normal electro-magnetic fields. The best analogy we can make with this information band is the similarity we have found to the magnetic domain that exists on a (magnetic) recorded surface. Under a microscope we have seen a dynamic movement of field in this area by observing the magnetic bit through a water immersion objective in solution with super paramagnetic iron oxide aquisol. This material is a super-colloid of iron oxide and re-orientes itself in the presence of a magnetically active field. One can observe this activity within a magnetic domain.

The magnetic domain of the space in the unit containing the coil is measured with the probe of the milli-gaussmeter. The average of ten readings is the figure used for each run and represents one dot on the graph shown. The results are provided for a sample of wine. One can see a direct correlation between the magnetic fields (as they are being created in space by the interaction of the field from the fluid reacting with the crystal)

(continued on page 9)

EXPERIMENT #74 TAPPING YOUR INFORMATION BODY USING PLANTS

Materials Required:

2-3 Different types of fresh
(not dried) herbs or plants¹

An assistant

Each plant carries a specific, unique vibration. Herbs are particularly effective in evoking specific responses in the information body of a human. Pick up one of the plants and place it to your chest (specifically the thymus region also called the witness area) and start counting from one to ten. While counting, have the assistant measure the strength of your arm (using kinesiography) in resistance to pressure when your arm is held out horizontally. When a particular number relating to the strength of that plant is found, your arm will drop with the slight pressure pushing on your arm. Now you have a numerical index of that plant. The higher the number, the more effective the plant is for you.

For example, if thyme is placed on your chest and you start the count of one and your hand drops, it indicates that there is an antagonism in your body to that vibration. If you try, say, rosemary and reach the count of 10, that would indicate your body at that moment accepts that vibration in a positive way. You can make combinations of herbs and find those combinations which provide the maximum strength to your arm and well-being for yourself. These herbs then can be used in food, in teas, or kept like pets.

EXPERIMENT #75 THE IDENTIFICATION OF BENEFICIAL FURNITURE DESIGNS

Materials Required:

*Several pictures of furniture
styles that interest you
An assistant*

Repeat the same test as experiment #75 placing the furniture picture on the thymus region while the assistant puts pressure on your arm. This time only use the numbers zero and 1 asking the question "Is it good or not good for me?" Your higher self will judge and analyze the suitability of design, color, balance and give you a decision. Once you have gotten these answers, you can then take this information and rank the furniture in a numerical order. By this means you can work out very involved furniture designs which are pleasing to the eye as well as pleasing to the higher self. One will get enhanced pleasure from the furniture when tested in this manner. This can be applied equally as well to clothing, automobiles, and other articles that one wishes to purchase.

BOOK REVIEWS

THE SECRETS OF ANCIENT GEOMETRY AND ITS USE, by Tons Brunes, Rhodos, Strandgade 36, Copenhagen K., 1967, Vols. 1 and 2.

This is a remarkable set of books put together by the author, the product of a lifetime of dedication to the study of ancient geometry. The geometric form of

a building creates (because of its geometry) information in space. This information carries with it a power to lift one up into new dimensions of understanding. Making a xerox copy of some of the plates of the temples of Poseiden and the Theseum and measuring these with the Omega 5 instrument, we have come to an amazing set of numerical figures. These two books are deeply recommended for anyone seriously interested in the field of information science.

BIOLOGICAL RHYTHMS AND MEDICINE, Cellular, Metabolic, Physiopathologic, and Pharmacologic Aspects by Alain Reinberg and Michael H. Smolensky, Springer-Verlag, NY, 1983.

Living systems (plants, animals and humans), go through a series of cycles which are called biological rhythms or chronobiology. This bioperiodicity is key to building the information body in any living system. Life is not linear; it goes through a series of rhythmic oscillations. This is true of all functions in a human, from the female menses to variations in blood pressure, urinary potassium, heart rate, etc. These variations build a series of information patterns which surround the body of an individual and this establishes then the temporal vital index of the health and well-being of a person, plant or animal.

We are continually changing. It is a joy to read the result of the research that is going on in the field of chronobiology. A book well worth reading.

THE CRYSTAL MEDALLION

by Marcel Vogel
with Jennét Grover

We have recently designed, after careful testing and measurement, a new, optically clear quartz crystal medallion, cut in the shape of a triangle, which is worn over the witness area (thymus gland). It may be programmed with any thought or intention you choose, but we have had great success using it as a protective shield from unwanted energies. A drop of a flower essence, a homeopathic remedy or such can be placed on this medallion and it will radiate its essence throughout your body.

When I imprint into the crystal medallion with the thought of love and well-being, I cohere all the energies of my body so that it becomes an impenetrable fortress of its own energies. Now I can handle external energies without taking them in, and without their interfering with the functioning of my own body. This does not mean that the medallion takes away the wearer's sensitivity; in contrast, it desensitizes the wearer to invasive external energies, so the wearer is able to remain open to tune into what he or she chooses.

Without this protection, I feel the differential vibrations of each of the people with whom I am interacting. There is a confusion within my being as to how to process these energies within my own system, and this begins to interfere with my normal body vibration. My energies get drained because of all of the vibrations I am forced to proc-

ess.

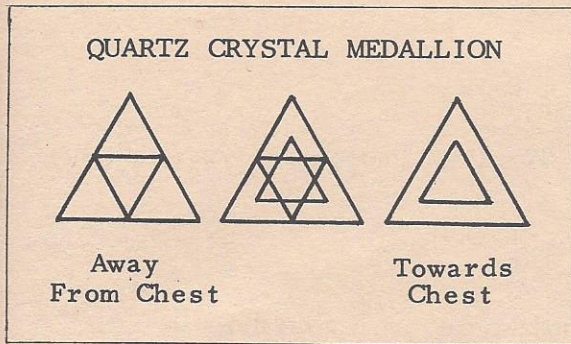
Surrounding our physical body we have an energy field known as the "auric curtain." After much experimentation with this field I have given it the name "information band." When this information band is interfered with, one loses control over one's own body and it gets weaker, sometimes losing consciousness as well. We're not talking disease here, but purely energetic information exchange. An example of this is when an audience projects a thought at a speaker. If the thought projected is one of approval, the speaker is likely to receive a feeling of well-being and increased energy. If the thought projected is one of disapproval, the speaker will immediately feel drained of energy and will most likely exhibit fatigue. Wearing the medallion at this time will prevent this type of energy drain.

Within the triangular structure is contained another triangle, one quarter the size of the medallion, with the tip facing up (as it is worn against the witness area) on the back of the medallion, and another triangle with the tip facing downwards (as it faces out from the body). The higher mind (or soul) works with symbols. From these symbols, the truth is being spoken. There is a triune nature to you and me. We are composed of a body, as represented by the top point of the medallion. Another point represents the mind, the interaction of the higher self with the matter of the body. And the third is the soul or spirit. Here we

(continued on page 7)

(continued from page 6)

have the three points of the triangle as they represent body, mind and spirit. In both esoteric and Christian philosophies you will find this element of the triune, the trinity, unity.



The two smaller triangles form pyramids in space, creating tetrahedrons, the symbols for water (the structure of which is also a tetrahedron). As above, so below. If you turn the medallion over, you find a reverse pyramid. There is a co-balancing of forces. The large triangle is also brought to a pyramid in space and so the energy is pouring out in one direction (creating a field in space around your body) and held stable in the other direction (keeping that field steady), similar to the actions of our healing crystals.

TO CLEAR AND CHARGE THE MEDALLION

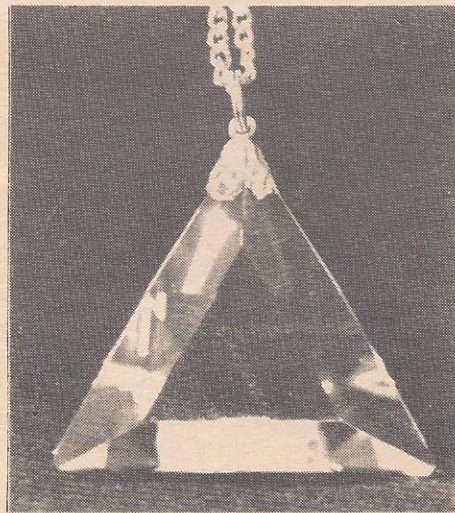
To CLEAR the medallion of unwanted energies, programs, or thoughts, hold it in one hand and rest the other hand over it. As you draw your breath in, think the thought of clearing the medallion. When you have done this, release this thought with a

pulsed breath (forceful breath through the nose) into the medallion.

To CHARGE or program the medallion, hold it as stated above, draw your breath in and think thoughts of love, well-being, healing, or whatever you desire and again, release these thoughts into the medallion with a pulsed breath.

Putting your intention into a device like this helps you build and maintain the ultimate shield or protection for yourself. Wearing one of these medallions with loving intent can hold the integrity of your body and maintain the equanimity of self in spite of whatever goes on in and around you.

(continued on page 10)



CLEAR CRYSTAL MEDALLION

The triangular medallion is composed of optically clear quartz crystal and contains the sacred geometrical symbol of the Star of David. See center order form for more details.

VOGEL CRYSTAL HEALINGS

by Linda Laing

Earlier this year I did a traditional Vogel healing using an 11-sided Vogel-Cuttm healing crystal. My client, 78-year-old Edna, had cancelled cataract surgery so I could work on her.

I worked at the thymus to remove energy blocks and on the nervous system of each eye. With the use of color therapy we channeled white, gold and multi colors of blue throughout the eye and through the nerve system. We worked together for three days. I told her to return to the doctor in three weeks. At the end of that time Edna called to tell me the cataracts were gone!

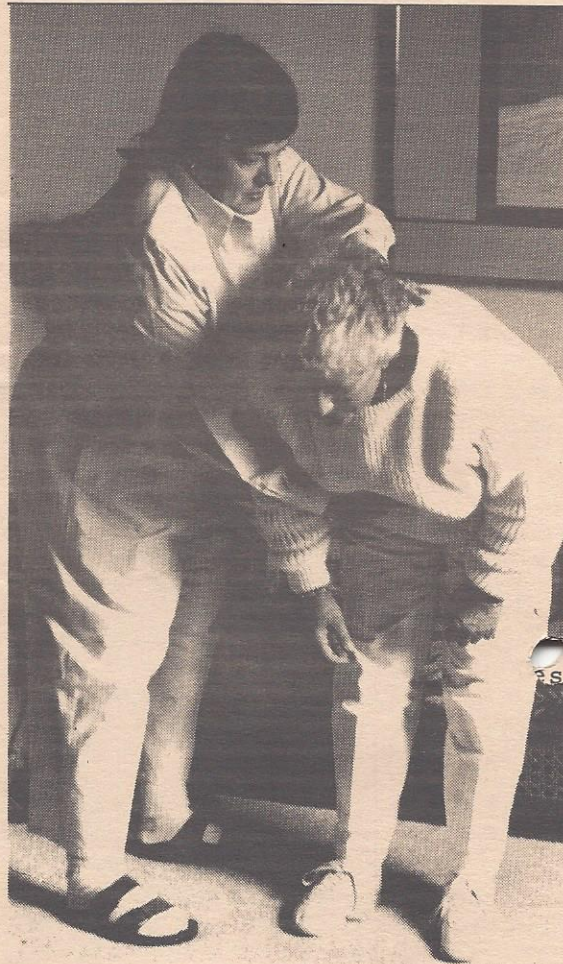
I had another case in January of this year involving a 52-year-old man named Wes who was bedridden and unable to bathe, feed himself or walk because of pain in his hands and feet.

I tuned into his energy and had him pulse himself into the Vogel-cuttm 11-sided healing crystal with me. Then I took him into a deep meditative state and had him go inside his energy field and release all blocks, going to the root cause of his illness and releasing it. We then channeled all seven chakra colors through his being, bringing them in through the tip of each toe and finger. We filled him with white and pink light channeled through his crown chakra to finish the process. After this first session Wes was able to walk, go to the bathroom and sit in a chair to watch TV.

I have been wearing the wood, silver and quartz triangular me-

dallion for two years. I wear it when I'm around lots of people to hold my energy level up and for protection. It also helps where loud noise will be an issue for me (air conditioning, traffic, etc). The medallion keeps me calmer and maintains my energy level. The medallion has also

(continued on page 10)



Linda Laing doing a crystal healing with a client.

Info Transfer cont'd. from pg. 4

and the information transfer taking place. This is the result of a critical change at the key point of maximum information transfer, which is shown both in the magnetic activity and the information transfer to the wine.

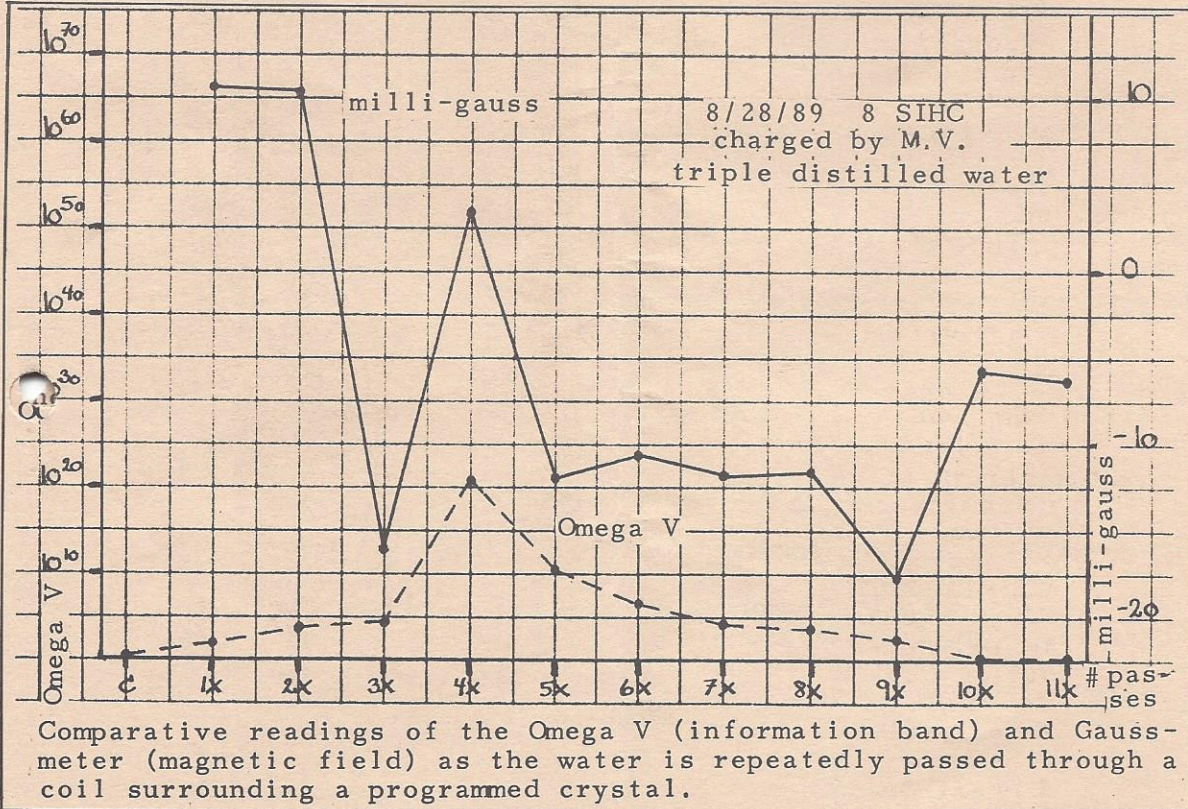
This is equally true for water and other fluidic materials. The interaction takes place in the dark, with no exposure to heat or electric fields. This graph is historic and is the result of the careful laboratory work done by Jennét Grover and Fauna Madsen.

I repeat, the readings from

the gaussmeter are dynamic, taken at the moment of the fluid passing around the crystal showing a radiative, dynamic exchange taking place. Secondly, the Omega 5 measurement of this fluid shows a transfer of this information to that fluid. Thirdly, this information results in an abrupt, distinct change in the chemistry and flavor of the wine or fluid being treated.

These are historic experiments and show A REAL CORRELATION OF INFORMATION TRANSFER BETWEEN A CRYSTAL AND A FLUIDIC MATERIAL AND THE RESULTANT CHANGE MAGNETICALLY IN THE ATMOSPHERE THAT SUR-

(continued on page 10)



Medallion cont'd. from pg. 7

We recommend that the medallion be cleared and re-charged periodically. How often depends upon how often you wish to change the program. Occasionally there will be times when you are in highly charged emotional situations or within extremely strong external energy fields, and you may choose to clear and re-charge your medallion at these times. This medallion is more than an art object. It is a means for sustaining one through various types of adversity. We humans are fragile and vulnerable, especially as we open our hearts to become more loving. It was designed to help us become all we can be, with the least external interference.

~~~~~

HINT: The crystal medallion sure would make a nice holiday gift for that someone special, including you!

~~~~~

Did you know that many people give gifts on the Day of the Three Kings, which is celebrated on January 6?

~~~~~

We apologize for the tardiness of this issue. The October 17 earthquake (plus funding problems), created a significant time lapse. We all suffered losses, both physical and emotional to varying extents, resulting from the quake. However, we are all alive and well and give thanks for this good fortune.

*Vogel Healings cont'd. from pg. 8*

been helpful working with clients. After removing psychic hooks, it brings the individual energy level up quicker and sets a healthy program in place faster.

I was working with one client who was taking 20 adrenal supplements a day. We released the blocks using the traditional Vogel technique. Wearing the medallion kept her energy up and, when she removed the medallion her energy collapsed. She wore mine for a month and then purchased her own. She finds she has to clear hers more often than I do, but it sure makes a difference in her energy.

(see p.11 for information on Linda Laing's workshops).

---

*Info Transfer cont'd. from pg. 9*  
 ROUNDS THE COIL AND CRYSTAL being used at that moment.

The study of information transfer is ongoing, using other types of materials and experimental procedures as well. Because the information band is a transference into matter of a program to bring to completion those reactions which are yet in potential, it is a subject of great significance. The result of this study will be that our understanding of the nature of information exchange will allow us to manipulate this information in a manner so that it can be modified to limit the proliferation of bacteria and viruses in foods and living beings, create new substances, and, in general, to improve the quality of life on this planet.

MARCEL VOGEL'S 1989-1990 SEMINAR SCHEDULE

- V. 18      SAN FRANCISCO, CA. "Ways Of Knowing: Access To Higher Power," contact Carol Roth at 415-323-3795.
- FEB. 25 - MAR. 11    EGYPT      Special Egyptian Tour - featuring Marcel Vogel. "Back To The Future: A Spiritual Reunion In Egypt." Call Melissa at 800-780-7724.
- JUDY MINGO WORKSHOPS - Therapeutic Use of the Healing Crystal  
Judy was a staff member at PRI and has worked with Marcel for 4 years. She is now located in Minneapolis and is available for crystal therapy, workshops & nutritional counseling. Call 612-377-5657.
- LINDA LAING WORKSHOPS - Crystal Therapeutics: Healing With Crystals
- MONTHLY      INDIANAPOLIS, IND.    Call Linda at 317-846-4632
- MONTHLY      CINCINNATI, OHIO    Call Linda at 317-846-4632
- MELISSA REYNOLDS WORKSHOPS - Crystal Therapeutics
- MONTHLY      OLYMPIA, WA            Call Melissa at 206-264-5449
- CAROL THOMAS-KLAUSNER - Crystal Healing II,  
Vogel Crystal Healing Workshop
- OCT.-DEC.    SAN DIEGO            Call 619-571-6072

THE STAFF AT P.R.I. WISHES ALL OF YOU A HAPPY HOLIDAY SEASON!  
MAY PEACE AND SERENITY BE YOURS NOW AND THROUGH THE NEW YEAR!

WE WOULD LIKE TO EXPRESS OUR THANKS TO THE FOLLOWING PEOPLE WHO HAVE DONATED THEIR TIME AND LOVE TO P.R.I. TO HELP US IN OUR RESEARCH:

Mike Devlin, George Dong, Elling Olsen (thank you for a year of helpful, pleasant hard-working and consistent effort - we'll miss you!!), Vince Halpin, Mary Lamson, Linda Laing, Pat and Claire at Tranquility Place, Twylah Turek, and Mary Ying.

CRYSTAL THERAPY INSTRUCTORS: The following people can provide interesting and informative lectures on crystal healing. They have been trained by Dr. Vogel and speak knowledgeably in relation to their particular specialties. All of these instructors will travel.

ROZANNE BAZINET Ph.D. MFCC, Sacramento, Ca. 916-489-2256/RON CARSON (RUMI DA), Orlando, Fla. 407-699-1672/MARY GOODNER, Dallas, TX. 214-991-4168/CHOWCHOW IMAMOTO (Earth Healing), San Mateo, Calif. 415-341-1955/WARREN KLAUSNER, Claremont, Calif. 714-621-7105/LINDA LAING,, Indianapolis, Ind. 317-846-4632/JUDY MINGO, Minneapolis, MN. 612-377-5657.JENNET GROVER, P.R.I. staff./DALE OLSON, Eugene, Or. 503-683-8418/MELISSA REYNOLDS, Tenino, Wa. 206-264-5449/MELINDA SCHULTZ, Carbondale, Co. 303-963-3670/CAROL THOMAS-KLAUSNER, San Diego, Ca. 619-571-6072.

THANK YOU FOR YOUR GENEROUS SUPPORT AND DONATIONS. The P.R.I. research laboratory has been supported primarily by Marcel's lectures and by the sales of crystals, the new medallion, newsletter and audio and video tapes. The more private funding, the more time Marcel will have to supervise and perform research in the laboratory. Remember, P.R.I. is a non-profit corporation which provides research and education to aid humanity. Won't you help us to help you?!



PSYCHIC RESEARCH, INCORPORATED  
1725 LITTLE ORCHARD ST., UNIT "C"  
SAN JOSE, CA 95125  
408 / 279-2291

ADDRESS CORRECTION REQUESTED  
DATED MATERIAL/TIME VALUE

Non-Profit Organization  
U.S. Postage  
Paid  
San Jose, CA  
Permit No. 5445

ns-